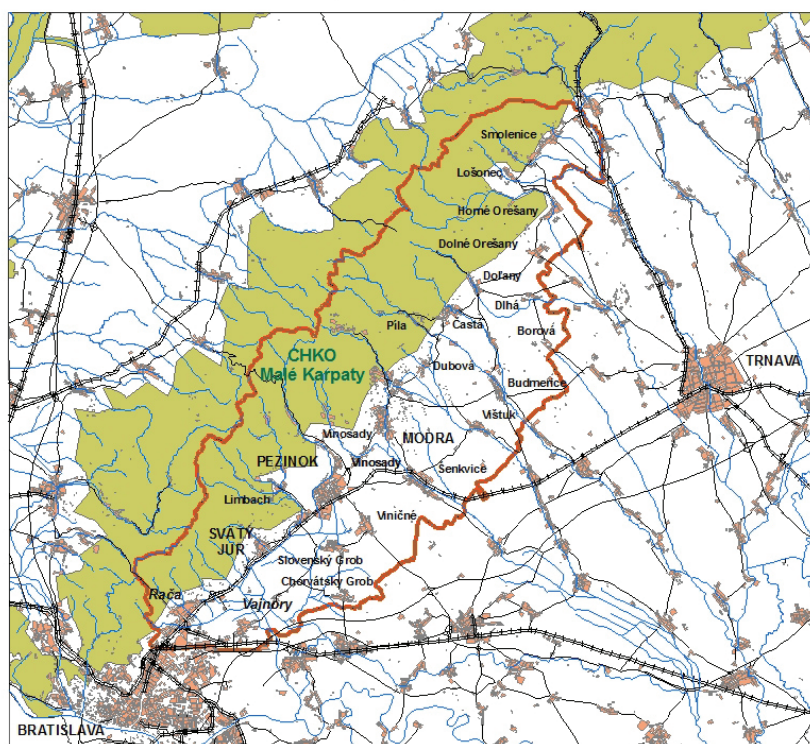


Pilot project: Podmalokarpatský región

Sub Little Carpathian Region consists of a chain of settlements between Smolenice in north-east and Bratislava-Rača in south-west. Cadastral territories of these settlements occupy the east or south-east parts of the Little Carpathians including its foothills. The south-east part of the region overlaps the Podunajská Hill Land. In terms of economic, social, and cultural/historic aspects, the region boasts several typical features associated with wine growing. Another specific characteristic of the region is close vicinity of the capital city Bratislava and its hinterland which strongly affects mainly the south part of the pilot region.

Podmalokarpatsky region and its hinterland



- subject area (Podmalokarpatský región)
- cities, towns, villages
- roads
- railroads
- rivers
- protected landscape area Malé Karpaty

0 2,5 5 10 15 20 25 km



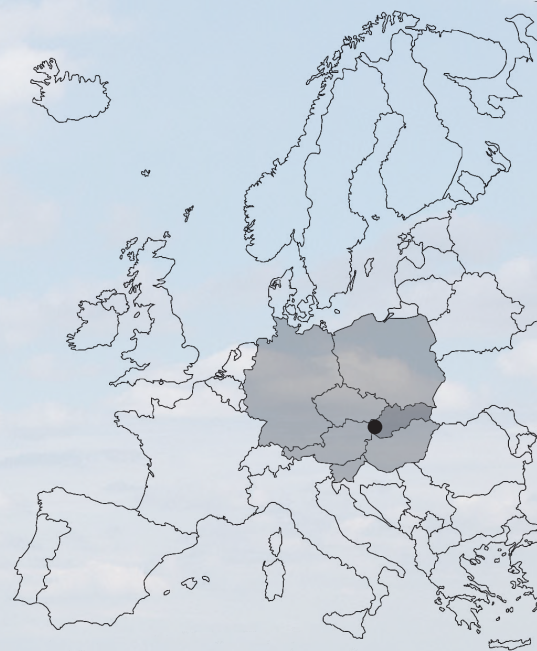
General map of the pilot area

PP4, Institute of Geography, Slovak Academy of Sciences, Bratislava, Slovak Republic

Project partner working team:

Jan Hanusin, Ph.D., leader of the project team PP 4
Martina Cebecauerova, Ph.D., Prof. Mikulas Huba, Ph.D. (till May 2012),
Prof. Vladimir Ira, Ph.D., Assoc. Prof. Jan Lacika, Ph.D.,
Michala Madajova, Ph.D., Prof. Jan Otahel, Ph.D. (from May 2012),
Peter Podolak, Ph.D., Robert Pazur and Martin Sveda, Ph.D. (both from
September 2012)
Erika Meszarosova, Katarina Nagyova

Name of the area:	Podmalokarpatský región (Sub-Little Carpathian Region)
Size:	518 km ²
Location:	West Slovakia, North-East from Bratislava
Geographical specifics:	Most important wineyard region in Slovakia
Population:	ca. 93 000
Dominant land-use:	Agricultural land, forests
Dominant economy:	Industry (in Bratislava), farming, winiculture
Administrative division:	Bratislava region, Western Slovakia (NUTS II)
Legislated protection:	Different categories on local areas



background: Svaty Jur (photo: Jan Lacika)

Outcomes:

- Preparation of the alternative development scenario of the Sub-Little Carpathian Region with stress on conservation of the cultural landscape values
- Questionnaire enquiry and interviews with decision-makers and opinion-makers in the concerned territory
- Podmalokarpatsky region cultural landscape brochure and DVD
- Organisation of a photo competition and an exhibition of historical photos from the pilot region "My region in time"
- Participative activities: meetings with engaged stakeholders; exchange of experience on local, regional and supraregional levels

The pilot region area is considered as the main and most typical wine growing region in Slovakia. Old mining and craft activities in settlements are another typical features of the area. Important imprint on the landscape was provided by several castles. During centuries the human and societal effort impacted the landscape and left a heritage materialized in cultural landscape.

The principal objectives of the pilot project encompass identification, protection, revalorisation and support to sustainable development of the unique types of cultural landscapes in the pilot region. Another important aim is an optimal combination of the conservationist ambitions with sustainable economic and social developments.

Project stakeholders involve local and regional governments, wine-growers, engaged public, local tourism and business representatives.

ALTERNATIVE DEVELOPMENT SCENARIO OF THE SUB-LITTLE CARPATHIAN REGION

time frame: Whole project period
stakeholders: Municipalities, decision makers, nature protectors and developers
tagret group: broad public

intention: To present an alternative development scenario for municipalities, developers and decision makers with respect to historical cultural landscape values.

outputs: Final text, maps, graphs, tables and papers in scientific journals.

long-term outputs: Supporting integration of historical cultural landscapes into the recent landscape structure and management.

PODMALOKARPATSKY REGION CULTURAL LANDSCAPE (brochure and DVD)

time frame: November 2011 – September 2012
tagret group: Municipalities and public in the pilot region

intention: Encyclopedia-style presentation of municipalities in the region with respect to their historical cultural landscape values.

outputs: A guide with text, maps, photos.

long-term outputs: Supporting integration of historical cultural landscapes into recent landscape structure and management.

ORGANISATION OF THE PHOTO COMPETITION AND THE PILOT REGION HISTORICAL PHOTOS EXHIBITION "MY REGION IN TIME"

time frame: May – September 2012

stakeholders: People participating in the competition

tagret group: General public in the pilot region

intention: Presentation of historical visual aspects of the region.

outputs: Competition, exhibition and a catalogue of best photos.

long-term outputs: Presentation of the historical aspects of the region, education, strenghtening of local patriotism.



photos to the right:

above: Opening of summer season in railway museum Bratislava-Raca

middle left: Meeting in Dolany, September 2011

middle right: Cerveny Kamen - castle feast, September 2011

below: Chappel Rozarka near Stefanova (photos: Jan Lacika)