

GEOGRAFICKÝ ÚSTAV SLOVENSKEJ AKADEMIE VIED

INSTITUTE OF GEOGRAPHY, SLOVAK ACADEMY OF SCIENCES

ŠTEFÁNIKOVA 49, 814 73 BRATISLAVA, SLOVAK REPUBLIC, TEL.: +421 2 5751 0187, FAX: +421 2 5249 1340



EUROPEAN UNION
EUROPEAN REGIONAL
DEVELOPMENT FUND



VITAL
LANDSCAPES
INTERREG IV B Project



The Institute of Geography (PP 4)

- is the scientific centre of the Slovak Academy of Sciences involved with the basic and applied research in all fields of geographical sciences.
- The research activities are realized in three scientific departments (Department of Physical Geography and Geomorphology, Department of Human Geography, and Department of Cartography and Geoinformation Science).
- Research of the Institute of Geography SAS relies on facts that geography is one of integrated sciences and concentrates into four main research clusters:
 - Structure and Dynamics of Natural Landscape, Hazards and Risks;
 - Socio-economic Changes and their Impact on Local and Regional Development;
 - Geographical Dimension of Sustainability and Quality of Life and
 - Landscape Changes Explored by Application of Remote Sensing Data and the Geographic Information Systems.

- The Institute is entitled to provide education of PhD students in two scientific branches of geography: Physical Geography and Geoecology and Regional Geography (8 PhD students).
- Three periodicals are edited and published by the Institute:
- The periodical *Geografický časopis* (Journal of Geography) brings original scientific studies containing the most recent knowledge from all fields of geography and the related sciences. *Geographia Slovaca* is a series of monographs and monothematic articles from various fields of geography, environmental science and regional geography. *Kartografické listy* (Cartographic Letters) is a yearbook of studies and specialized contributions from cartography, photogrammetry, remote sensing and geoinformation science.

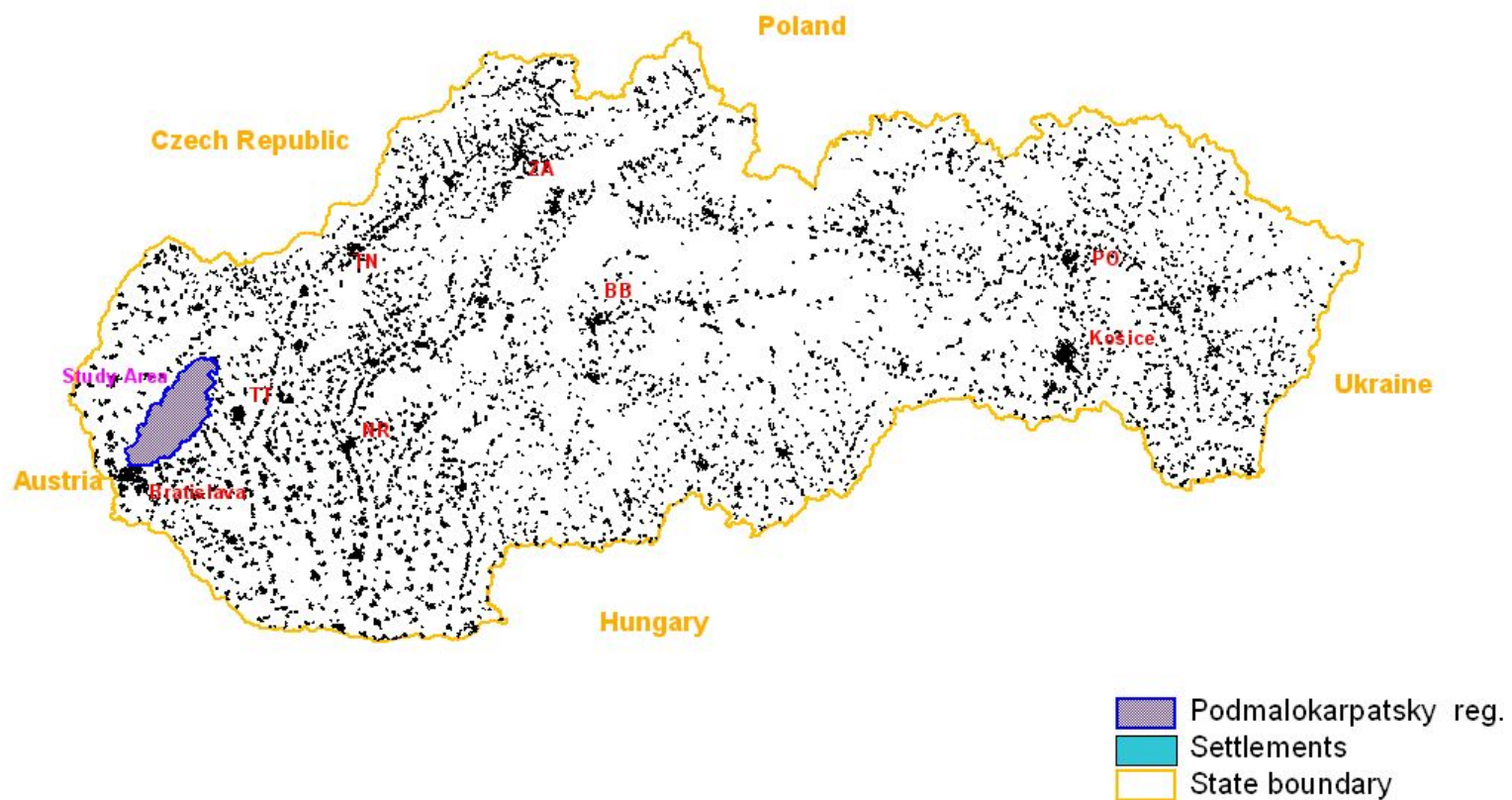
Pilot project 1 (Action 3.2.1)

Elaboration of exemplary landscape development plans/strategies and evaluation of their sustainability

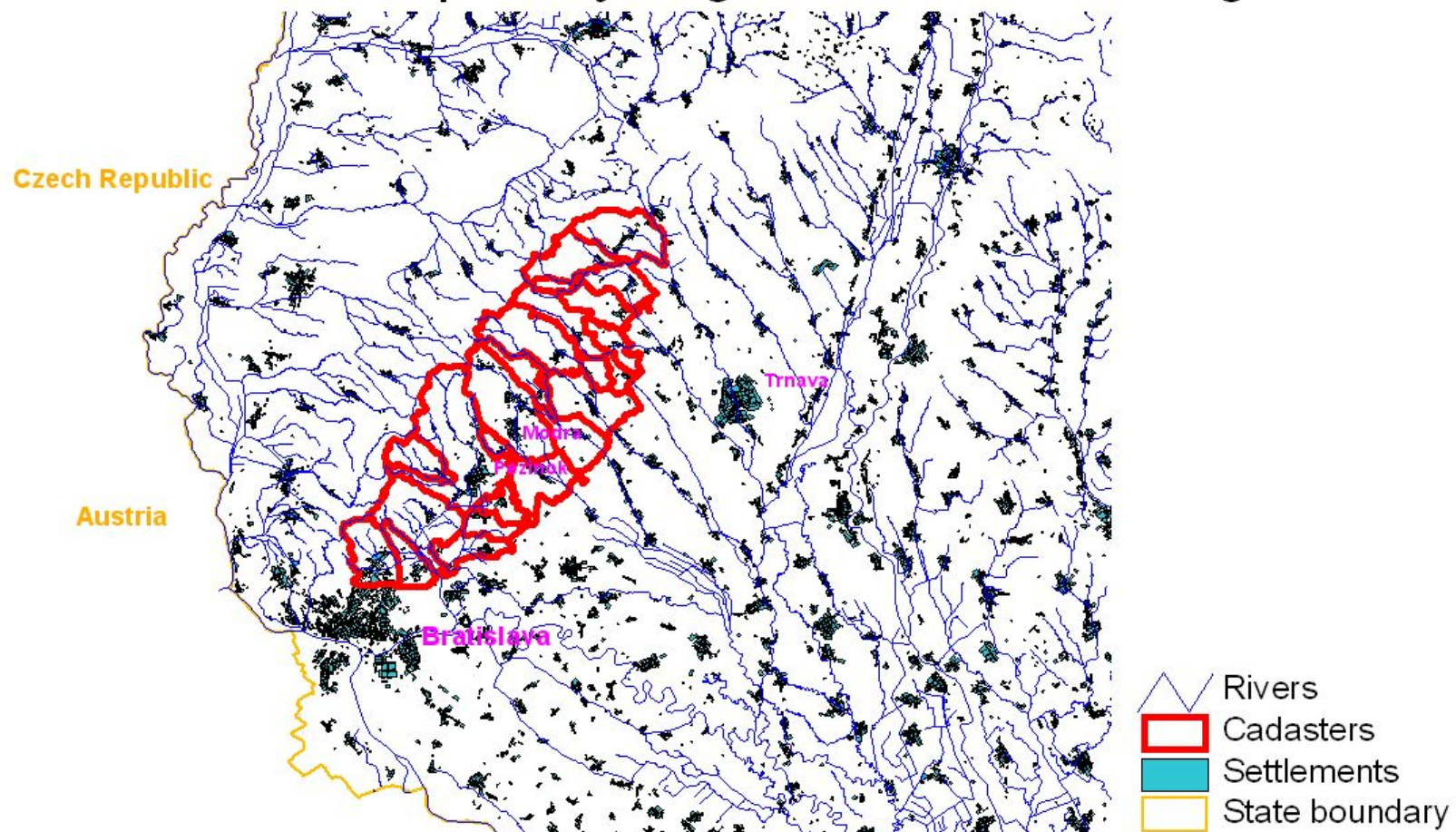
Alternatives of the Podmalokarpatsky region (Sub-Little Carpathians region) cultural landscape development

Setting the scenarios of landscape/regional development of the Podmalokarpatský region (Sub-Little Carpathian region) based on the principles of sustainability and integrated landscape management, with special attention to traditional cultural elements (viniculture landscapes, traditional architecture), with regard to nature protective function.

Position of the Study Area



Podmalokarpatský region and its hinterground



Podmalokarpatsky region

488 km²

Transitional zone between Western Carpathian mountain system (Little Carpathians – up to 760 m a.s.l.) to Western Pannonian basin lowlands (Danube lowland 130 m a.s.l.)

different types of cultural landscape (urban, suburban, and rural with various type of human activities: viniculture, agriculture, forestry, tourism, industry, nature and culture heritage protection, ...)

22 communes and 2 peripheral wards of Bratislava City (Rača and Vajnory)

some 93 000 inhabitants

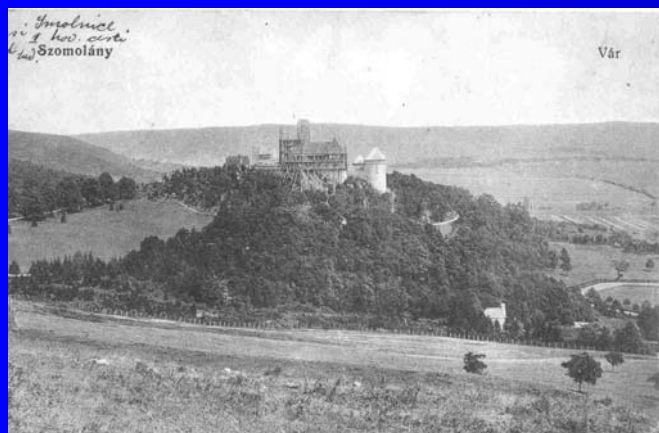
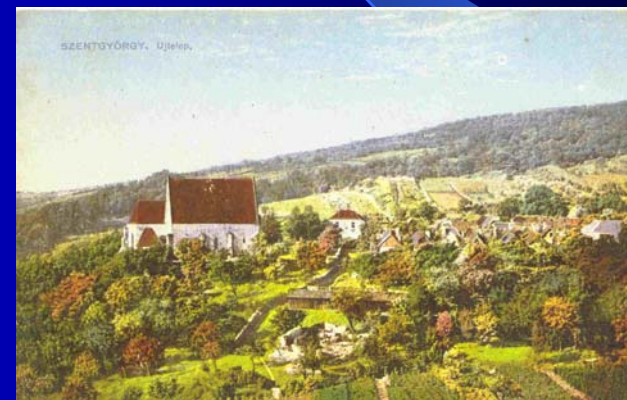
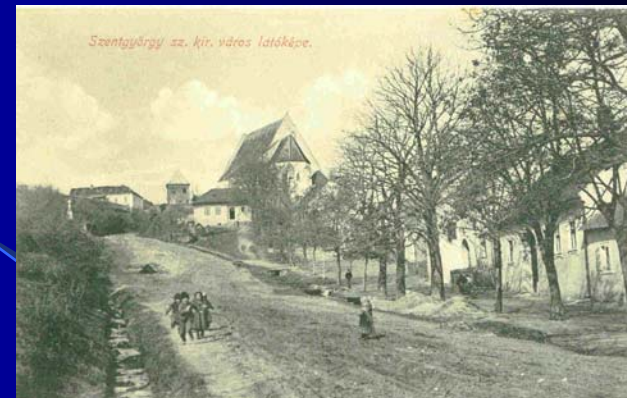
190 inh./km²

in 2 (Self Governing) Regions – Bratislava and Trnava)

Traditional viniculture and agricultural region with historical structures of cultural landscape (including historical towns, castles, ...)

Problems: urban sprawl of Bratislava city, land-cover change and transformation of landscape, changing demographic behaviour, changing life style, re/establishment of local self-government, transformation (low efficiency) of local and regional planning...

Some aspects of the Region...



1 ANALYSIS

1.1 Analysis of the natural, socioeconomic and cultural sphere

- area setting
- land cover, its changes and historical development analysis
- setting of the coefficient of ecological stability
- setting of natural landscape types, functional and cultural landscape types
- socioeconomic analysis of the area (demographic, economic, infrastructural),
- analysis of cultural values of the area
- developing of enquiry and its analysis

1.2 Analysis of relevant legal and strategic documents

- obligatory documents (territorial plan, Plan of social and economical development, Territorial system of ecological stability...)
- facultative documents (local, regional Agenda 21, ...)
- institutional framework analysis

Special attention will be devoted to the comparison of the state of art of the Podmalokarpatský región with European Landscape Convention (ELC) demands: legal background and strategic documents, opinions and expectations of stakeholders arised from the questionnaire versus ELC demands, goals, commitments.

Setting the types (subtypes) of cultural landscape in Podmalokarpatský region and comparison with ELC types.

2 SYNTHESIS

Setting the scenarios of landscape/regional development of the Podmalokarpatský region based on the principles of sustainability and integrated landscape management, with special attention to traditional cultural elements (viniculture landscapes, traditional architecture) and with regard to landscape quality objective.

3 PROPOSAL OF THE MEASURES

Pilot Project Within Action 4.3.3

Preparation, implementation, communication and evaluation of a pilot project entitled „MY LANDSCAPE IN TIME“

Goal: raising awareness of local people towards paying attention to changes of their surroundings.

Description: local people will be motivated to find historic pictures from the region (old photos or postcards in their own family albums, museums or published in specialised web site) and to take comparative photo of a temporary situation of the place recorded at the old exposure.

Technical details: old and new photos will be continuously published in specialised internet portal, in optimal case with all technical details (date of taking pictures, authors, technical parameters of cameras and GPS navigation). AINova will assist the authors with digitalisation of the old sources, and if necessary also new photos, if taken by analog cameras.

Grand finale: participants will be awarded in three different categories: 1) amounts of taken pictures, 2) accuracy of new exposure in comparison to original picture, and 3) originality of the place – innovativeness – places not publicly well-known or even vanished.

Outputs: digital database, published on web-site.

Thanks for your attention !



EUROPEAN UNION
EUROPEAN REGIONAL
DEVELOPMENT FUND



**VITAL
LANDSCAPES**
INTERREG IV B Project

